

MOHAWK

PARALLELOGRAM

50-26-S SURFACE MOUNT INSTALLATION REQUIREMENT DRAWINGS



MOHAWK RESOURCES LTD.

65 VROOMAN AVE.

AMSTERDAM, NY 12010

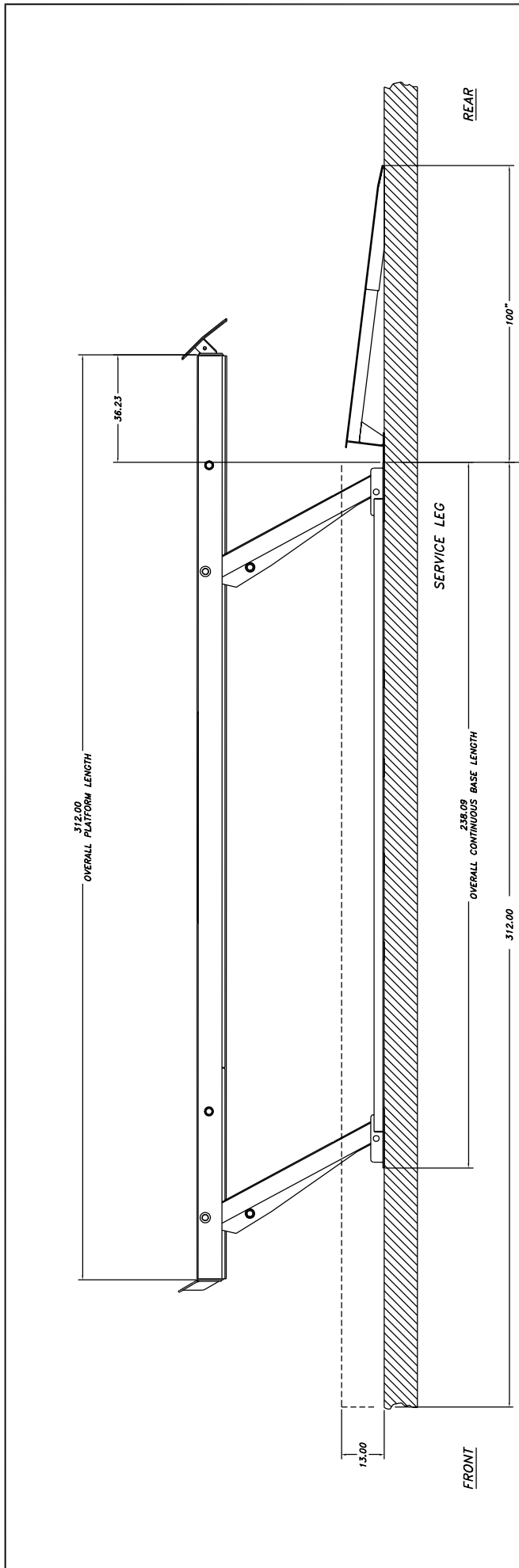
TOLL FREE: 1-800-833-2006

LOCAL: 1-518-842-1431

FAX: 1-518-842-1289

INTERNET: WWW.MOHAWKLIFTS.COM

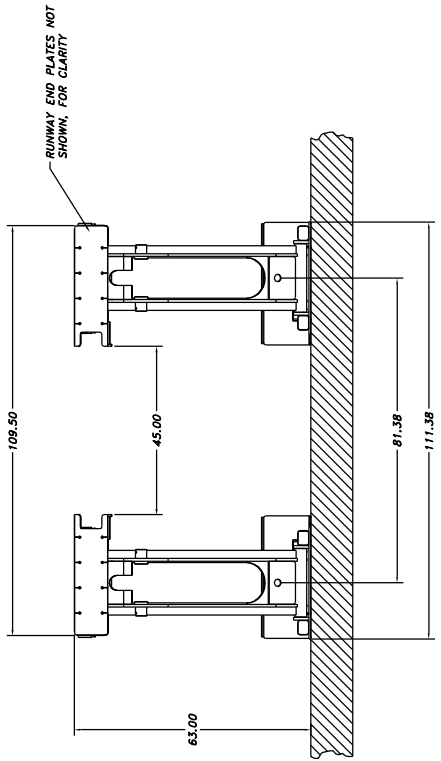
E-MAIL: SERVICE@MOHAWKLIFTS.COM



SURFACE MOUNTED CONTINUOUS BASE INSTALLATION
 THIS CONFIGURATION IS MOST OFTEN USED FOR FLEET MAINTENANCE, REPAIR AND SERVICE APPLICATIONS.
 THE LIFT UNIT TRANSLATES TO THE REAR APPROXIMATELY 36 1/8" DURING THE VERTICAL ARTICULATION.

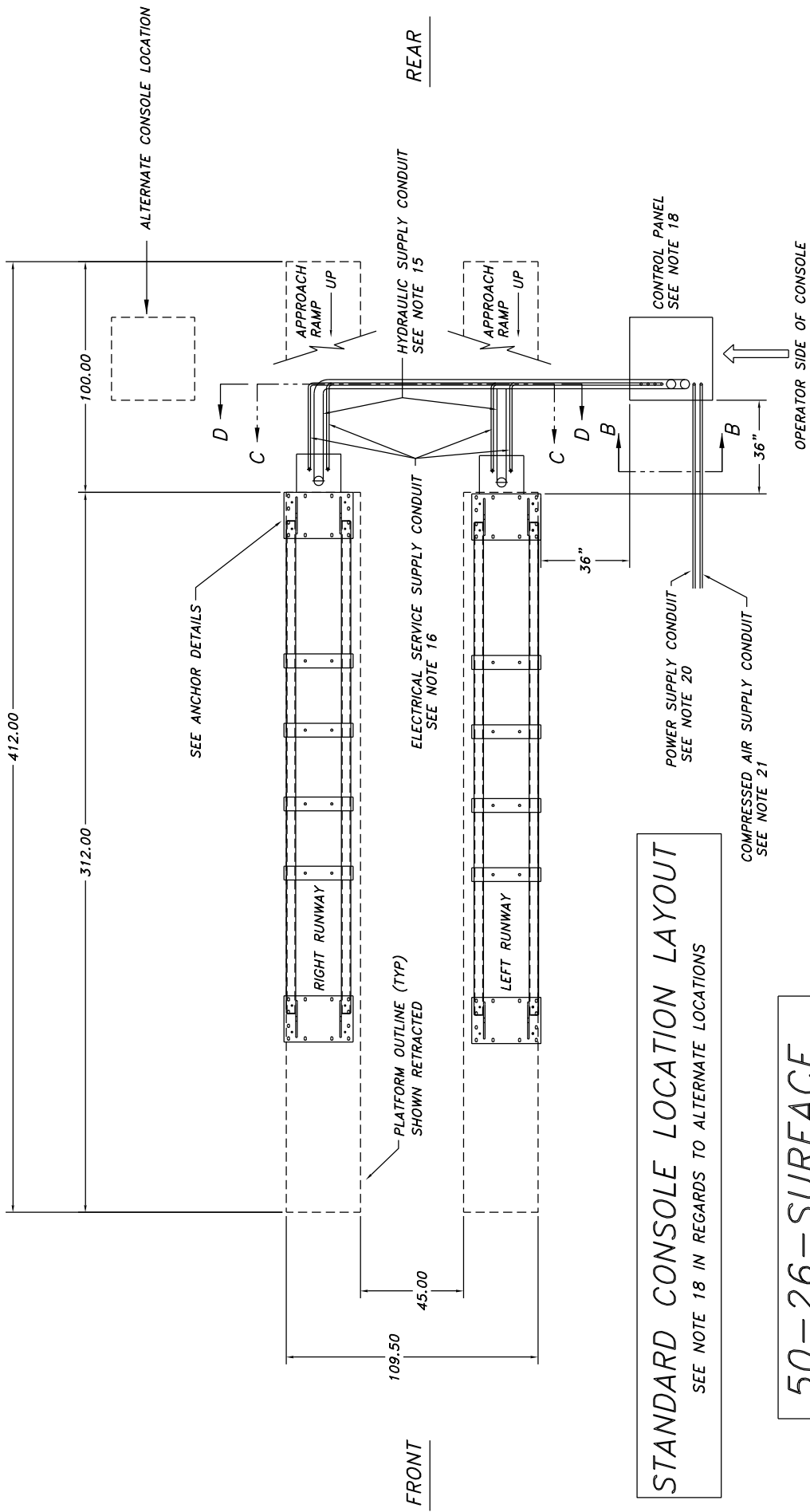
50-26-SURFACE

PAGE 2 of 2



NOTICE OF CONFIDENTIAL INFORMATION INFORMATION CONTAINED HEREIN IS CONFIDENTIAL AND PROPERTY OF MOHAWK RESOURCES LTD. IT SHALL BE USED SOLELY FOR THE PURPOSES OF ASSISTANCE IN INSTALLATION OF THE EQUIPMENT FOR ANY OTHER PURPOSES IS PROHIBITED.		TELERANCES FINISH DIMEN ± 0.00 FINISH DIMEN ± 0.05 DIMEN ± 0.05 DIMEN ± 0.05 FILE NAME: P-010-A-001		P-010- SCALE: 1/16 CHECKED: [] DATE: 4/19/03		DRAWN: [] APPROVED: [] WEIGHT: [] FROM: []		MOHAWK RESOURCES LTD. INSTALLATION REQUIREMENTS DRAWING: 50-26-SURFACE	
NOTES: 1. REMOVE ALL SHARP CORNERS & EDGES. 2. FINISH TO BE 125 RMS. 3. WELDING MEDIUM SHALL CONFORM TO AWS E-7011 CODE S3 FLUX CORD WIRE ONLY.		NEXT ASSEMBLY:		DATE: 4/19/03		WEIGHT: []		FROM: []	

D-SIZE



STANDARD CONSOLE LOCATION LAYOUT
 SEE NOTE 18 IN REGARDS TO ALTERNATE LOCATIONS

50-26-SURFACE

C-SIZE

NOTICE OF CONFIDENTIAL INFORMATION
 INFORMATION CONTAINED HEREIN IS CONFIDENTIAL AND PROPERTY OF MOHAWK RESOURCES LTD., WHERE DRAWING IS FURNISHED TO OTHERS IT SHALL BE USED SOLELY FOR PURPOSES OF INSPECTION OR DISCLOSED BY THE RECIPIENT FOR ANY OTHER PURPOSES WHATSOEVER.

- NOTES:**
1. REMOVE ALL SHARP CORNERS & EDGES.
 2. UNLESS OTHERWISE SPECIFIED, SURFACE FINISH TO BE 125 RMS.
 3. WELDING MEDIUM SHALL CONFORM TO AWS SPECIFICATIONS TO E-70XX ELECTRODES OR E-70TT CODE 5.3 FLUX CORE WIRE ONLY.

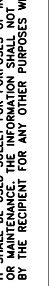
TOLERANCES:

ANGULAR	± 1.0
FRACTIONAL	± .030
DECIMAL	± .005
XXX	± .005

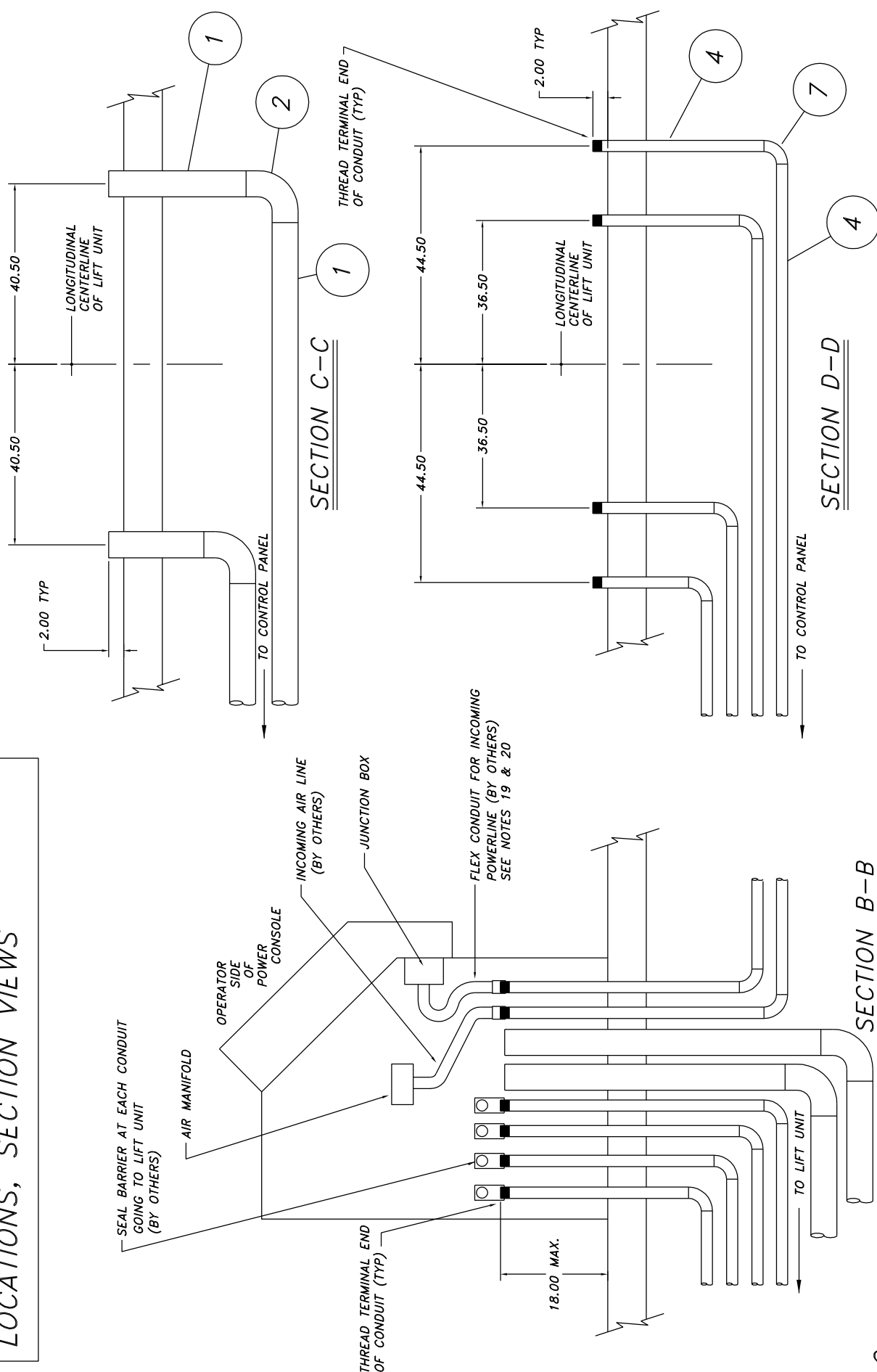
FILE NAME	P-010-D-001
DATE	4/04
WEIGHT	LB.
FROM	FRDM
DRAWING NUMBER	P-010-D-001

SCALE	P-010-A-001
CHECKED	
APPROVED	
DRAWN	dgk

MOHAWK RESOURCES LTD.
 TITLE 50-26-SURFACE STANDARD CONSOLE LOCATION LAYOUT



LIFT & CONSOLE SUBGRADE CONDUIT LOCATIONS, SECTION VIEWS



C-SIZE

NOTICE OF CONFIDENTIAL INFORMATION
 INFORMATION CONTAINED HEREIN IS CONFIDENTIAL AND PROPERTY OF MOHAWK RESOURCES LTD., WHERE DRAWING IS FURNISHED TO OTHERS FOR CONSTRUCTION, OPERATION, MAINTENANCE, REPAIR, REPLACEMENT OR MAINTENANCE. THE INFORMATION SHALL NOT BE USED OR DISCLOSED BY THE RECIPIENT FOR ANY OTHER PURPOSES WHATSOEVER.

- NOTES:**
1. REMOVE ALL SHARP CORNERS & EDGES.
 2. UNLESS OTHERWISE SPECIFIED, SURFACE FINISH TO BE 125 RMS.
 3. WELDING MEDIUM SHALL CONFORM TO AWS SPECIFICATIONS TO E-70XX ELECTRODES OR E-70TT CODE 5.3 FLUX CORE WIRE ONLY.

TOLERANCES:
 ANGULAR ± 1.0
 DIMENSIONAL ± 0.30
 DECIMAL ± 0.30
 DECIMAL ± 0.05
 FILE NAME P-010-D-002

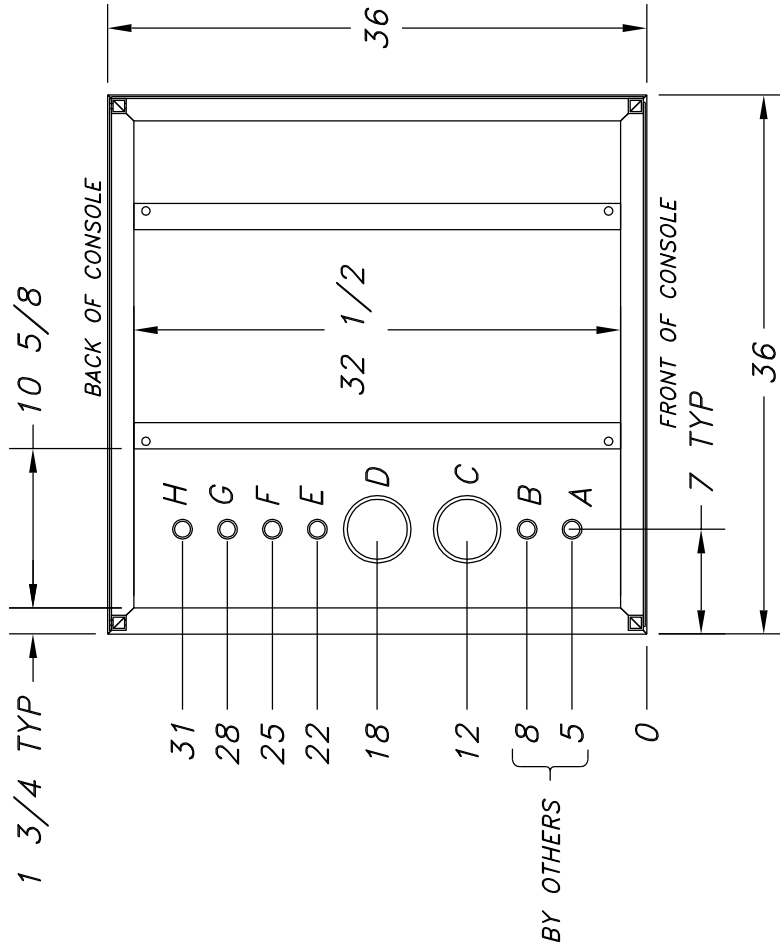
P-010-A-001
 NEXT ASSEMBLY

SCALE
 CHECKED
 DATE 4/03

DRAWN dak
 APPROVED
 WEIGHT LB.
 FROM

MOHAWK RESOURCES LTD.
 TITLE LIFT & CONSOLE CONDUIT LOCATIONS, SECTION VIEWS
 DRAWING NUMBER P-010-D-002

TOP VIEW OF CONSOLE FRAME

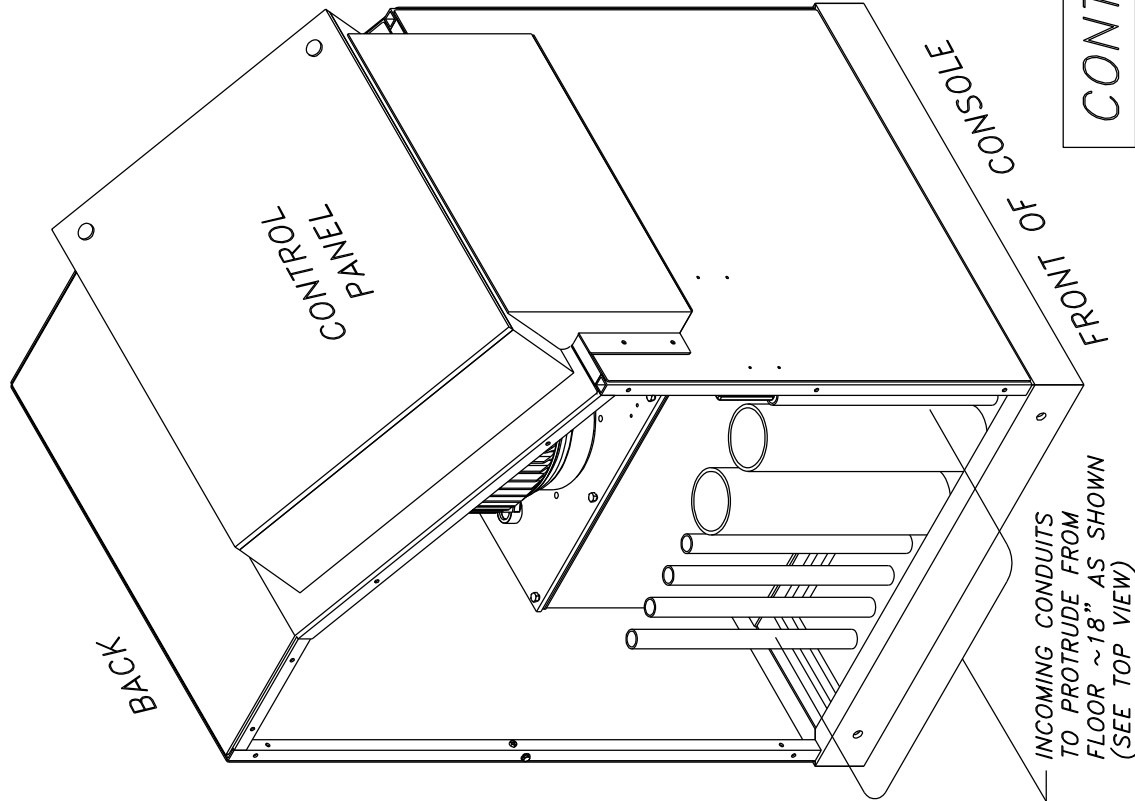


CONDUIT SIZES & APPLICATION:

- A: 1" (MIN) SCHED 40 STEEL PIPE – INCOMING POWER
- B: 1" (MIN) SCHED 40 STEEL PIPE – INCOMING AIRLINE
- C,D: 4" SCHED 40 PVC PIPE – HYDRAULIC & AIR TO LIFT
- E,F,G,H: 1" (MIN) SCHED 40 STEEL PIPE – ELECTRICAL TO LIFT

CUSTOMER PREFERENCE OPTIONAL

* NOTE: USE SMOOTH ELECTRICAL 90'S IN CONDUITS, NOT PLUMBING 90'S !!

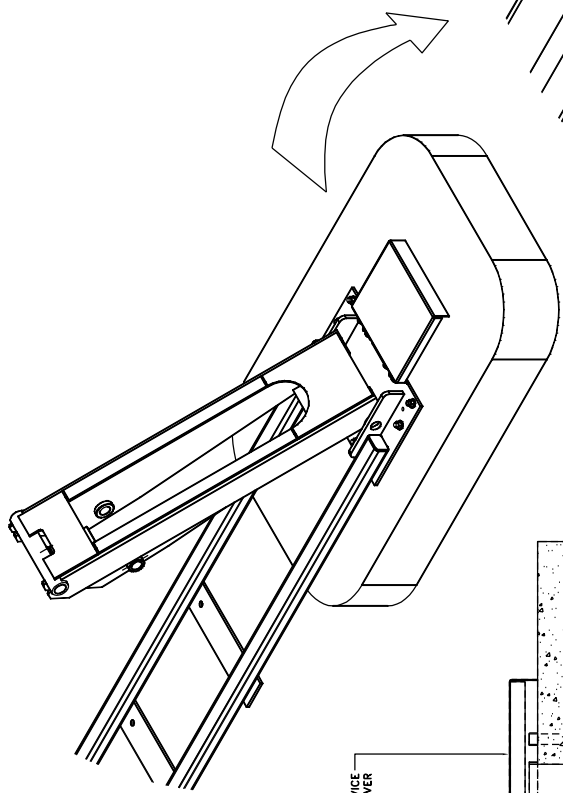


CONTROL CONSOLE & STUB-UP DETAILS

NOTICE OF CONFIDENTIAL INFORMATION
 THIS DRAWING IS THE PROPERTY OF MOHAWK RESOURCES LTD. IT IS TO BE USED ONLY FOR THE PROJECT AND SHALL NOT BE REPRODUCED OR TRANSMITTED IN ANY FORM OR BY ANY MEANS, ELECTRONIC OR MECHANICAL, INCLUDING PHOTOCOPYING, RECORDING, OR BY ANY INFORMATION STORAGE AND RETRIEVAL SYSTEM. WITHOUT THE WRITTEN PERMISSION OF MOHAWK RESOURCES LTD.

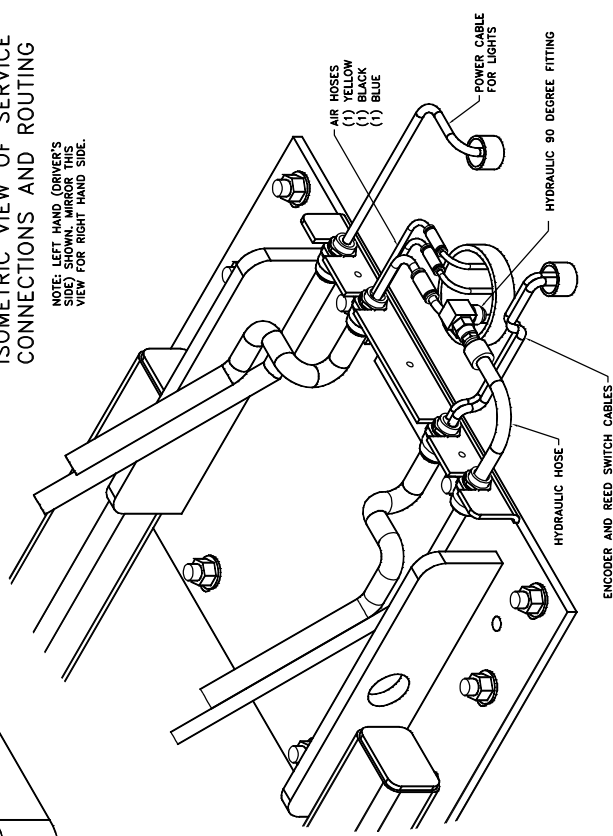
NOTES:
 1. INCLUDE ALL SHARP CORNERS & EDGES.
 2. FINISH TO BE AS SPECIFIED. SURFACE FINISH TO BE AS SHOWN.
 3. SPECIFICATIONS TO E-70XX ELECTRICALS OR E-7011 CODE 53 FLOW CORE WIRE ONLY.
 FILE NAME: P-010-0-003
 NEXT ASSEMBLY

SCALE	P-010-A-001	TOLERANCES	± 1/16	DRAWN	MOHAWK RESOURCES LTD.
CHECKED		± 1/32	APPROVED	TITLE	CONTROL CONSOLE & STUB-UP DETAILS
DATE	4/03	± 1/64	WEIGHT	FROM	P-010-D-003
			LB		

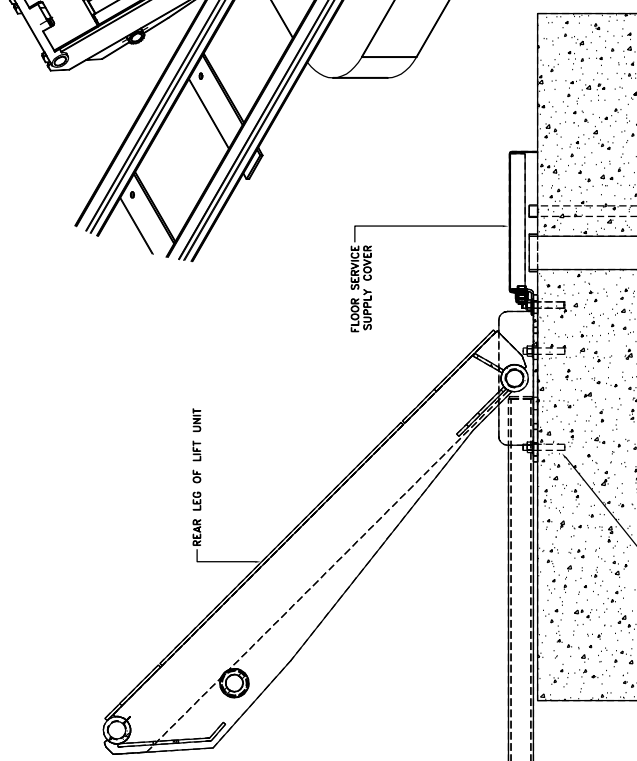


ISOMETRIC VIEW OF SERVICE CONNECTIONS AND ROUTING

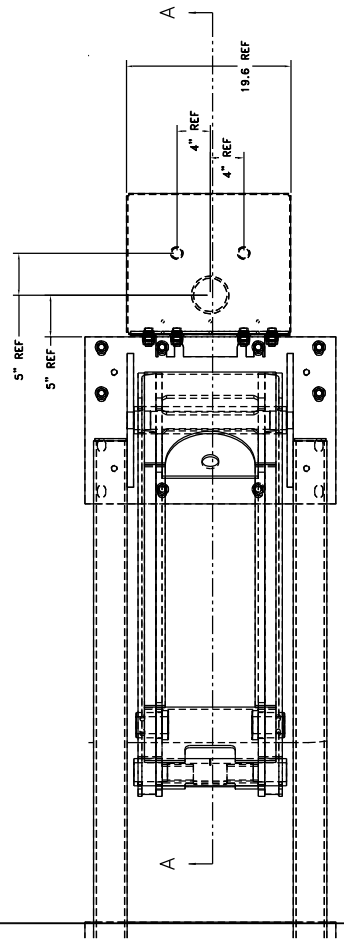
NOTE: LEFT HAND (DRIVER'S SIDE) VIEW AND RIGHT HAND SIDE VIEW FOR RIGHT HAND SIDE.



ENCODER AND REED SWITCH CABLES



SECTION A-A
ANCHOR BOLT ASSEMBLY



NOTICE OF CONFIDENTIAL INFORMATION
 INFORMATION CONTAINED HEREIN IS CONFIDENTIAL AND PROPERTY OF MOHAWK RESOURCES LTD. IT IS TO BE KEPT SECRET AND NOT DISCLOSED TO ANY OTHER PERSONS WITHOUT THE WRITTEN CONSENT OF MOHAWK RESOURCES LTD. THIS INFORMATION SHALL BE KEPT SECRET AND NOT DISCLOSED TO ANY OTHER PERSONS WITHOUT THE WRITTEN CONSENT OF MOHAWK RESOURCES LTD.

NOTES:
 1. REMOVE ALL SHARP CORNERS & EDGES.
 2. UNLESS OTHERWISE SPECIFIED, SURFACE FINISH SHALL BE AS SHOWN.
 3. WELDING SHALL BE PERFORMED TO AWS SPECIFICATIONS TO E-70XX ELECTRODES OR E-70T1 CODE 5.3 FLUX CORE WIRE ONLY.

TO: ENGRS
 ANGLAR
 ELECTRICAL
 0.000

FILE NAME
 P-010-D-005

P-010-A-001
 CHECKED 1/8
 DATE 4/15/03
 WEIGHT n/a
 NEXT ASSEMBLY

MOHAWK RESOURCES LTD.	SCALE	DATE	WEIGHT	FROM
Paralalogram Installation Service Leg Conduit Details	1/8	4/15/03	n/a	n/a
DRAWING NUMBER	APPROVED	DATE	WEIGHT	FROM
P-010-D-005	PH/2089	4/15/03	n/a	n/a

LIFT DATA TABLE	
MOHAWK RESOURCES, LTD PARALLELOGRAM LIFT MODEL 50-26-SURFACE	
LIFT UNIT DATA	--
MAXIMUM LOAD CAPACITY (LBS)	50,000
ANCHORAGE	--
ANCHOR BOLT DIAMETER (IN.)	3/4"
TOTAL NUMBER OF ANCHOR BOLTS	48
BOLT PATTERN	SEE ANCHOR DETAILS
ANCHOR BOLT SETTING TORQUE	N/A- SEE ANCHOR DETAILS
MINIMUM EMBEDMENT LENGTH (IN.)	3.00
MINIMUM CONCRETE THICKNESS (IN.)	6" ON GRADE (SEE NOTE 23)
HYDRAULIC	
RESERVOIR CAPACITY (GAL)	30 TOTAL
OIL TYPE	DEXRON III (ATF)
ELECTRICAL	
MOTOR HORSEPOWER	20
208/230 V 3 PH	60 AMPERE
or 460 V 3 PH	30 AMPERE
CONTROL CIRCUIT TRANSFORMER 1000 VA	7.69 AMP
24 VDC POWER SUPPLY	4.8 AMP
LIGHT FIXTURES (OPTIONAL LIGHTING KIT)	QTY 6
SHOP AIR	--
AIR PRESSURE (PSI)	85 to 100
AIR VOLUME- LIFT (CFM)(LOCKS)	5
AIR VOLUME- OPTIONAL ROLLING JACK (CFM)	25 EACH
AIR VOLUME- OPTIONAL SHOP AIR KIT (CFM)	20
AIR VOLUME- TOTAL REQ'D CAPACITY (CFM)	30 MINIMUM
AIR VOLUME- TOTAL REQ'D CAPACITY (CFM)	50 SUGGESTED

REQUIRED MATERIAL LIST			
MATERIALS SHOWN ON THIS LIST SHALL BE USED WITHOUT SUBSTITUTION UNLESS SPECIFICALLY APPROVED IN WRITING BY MOHAWK RESOURCES, LTD.			
12	1	LOCKOUT/TAGOUT DISCONNECT BOX	PER LOCAL ELECTRICAL CODES
11*	AR	LEVELING SHIMS	1/16", 1/8", 1/4" THICK
10*	48	3/4" x 5" ANCHOR BOLT ASSEMBLY	WEJ-IT - WEDGE ANCHORS
9	4	1" SEAL BARRIER	CROUSE - HINDS EYS3
8	4	1-3/4" REDUCER BUSHING	CROUSE - HINDS RE32
7	4	1" SCH 40-90 DEG ELBOW	CROUSE - HINDS EL3
6*	1	JUNCTION BOX (IN CONSOLE)	STEEL
5	AR	SEALITE FLEXIBLE CONDUIT	METAL CORE
4	AR	1" RIGID CONDUIT	STEEL
3	1	FILTER/LUBRICATOR/REGULATOR, DRYER SHUTOFF	
2	AR	4" SCH 40 STREET ELBOW	STEEL or PVC
1	AR	4" SCH 40 PIPE	STEEL or PVC
ITEM	QTY	DESCRIPTION	MATERIAL
		* ITEMS SUPPLIED BY MOHAWK WITH THE LIFT UNIT	

NOTICE OF CONFIDENTIAL INFORMATION
 INFORMATION CONTAINED HEREIN IS CONFIDENTIAL AND PROPERTY OF MOHAWK RESOURCES LTD. WHERE DRAWING IS FURNISHED TO OTHERS IT SHALL BE USED SOLELY FOR PURPOSES OF INSPECTION, INSTALLATION, REPAIR, MAINTENANCE, OR REPRODUCTION. IT IS NOT TO BE DISCLOSED BY THE RECIPIENT FOR ANY OTHER PURPOSES WHATSOEVER.

NOTES:
 1. REMOVE ALL SHARP CORNERS & EDGES UNLESS OTHERWISE SPECIFIED, SURFACE FINISH TO BE 125 RMS.
 2. FINISH TO BE 125 RMS.
 3. WELDING MEDIUM SHALL CONFORM TO AWS SPECIFICATIONS TO E-70XX ELECTRODES OR E-70TTI CODE 5.3 FLUX CORE WIRE ONLY.

TOLERANCES:
 ANGULAR ± 1.0
 FRACTIONAL ± .030
 DECIMAL ± .005
 0.XXX ± .005
 FILE NAME P-010-D-006

P-010-A-001
 NEXT ASSEMBLY

SCALE
 CHECKED
 DATE 4/03

DRAWN *clak*
 APPROVED

WEIGHT L.B.
 DRAWING NUMBER P-010-D-006

MOHAWK RESOURCES LTD.
 TITLE 50-26-SURFACE
 LIFT DATA TABLE

GENERAL NOTES

NOTE 1
IF THE EXISTING CONCRETE FLOOR HAS A DOCUMENTED MINIMUM STRENGTH OF NOT LESS THAN $F'c = 4,000$ PSI AND IS AT LEAST 6 INCHES THICK, THEN THE FLOOR SYSTEM MAY BE USED WITHOUT ALTERATIONS. GENERALLY ANY FLOOR AREA WHICH IS DESIGNED FOR VEHICLES OF THE SAME WEIGHT AS THE LIFT UNIT MAXIMUM CAPACITY WILL BE ADEQUATE FOR INSTALLATION OF THE LIFT UNIT. LIFT UNIT CONTACT PRESSURES WILL BE EQUAL TO OR LESS THAN THE WHEEL CONTACT PRESSURES.

NOTE 2
IF THE CONCRETE FLOOR SYSTEM DOES NOT MEET MINIMUM SPECIFICATIONS OF NOTE 1 ABOVE, THEN A NEW CONCRETE FLOOR SHALL BE INSTALLED TO SUPPORT THE LIFT.

NOTE 3
IF THE STRENGTH OF AN EXISTING FLOOR SYSTEM IS UNKNOWN OR NOT DOCUMENTED, ITS STRENGTH SHOULD BE DETERMINED. CORE SAMPLES SHOULD BE TAKEN TO DETERMINE THE STRENGTH OF THE FLOOR.

NOTE 4
ANY NEW CONCRETE USED FOR REPAIRS OR ALTERATIONS TO THE FLOOR SYSTEM SHALL BE AT A MINIMUM $F'c = 4,000$ PSI, WITH HEAVY AGGREGATE. FOR ANY NEW CONCRETE IT SHALL REACH ITS FULL 28 DAY $F'c$ STRENGTH BEFORE THE LIFT AND THE ANCHOR BOLTS ARE INSTALLED.

NOTE 5
ANY NEW CONCRETE USED FOR FLOOR REPAIRS OR ALTERATIONS SHALL HAVE REINFORCING AS REQUIRED FOR THE SOIL CONDITIONS AND VEHICLE LOAD LEVEL. THE REINFORCING SHALL BE DETERMINED BY OTHERS. AT A MINIMUM TWO LAYERS OF 6 X 6 10/10 WELDED WIRE FABRIC SHALL BE USED FOR ANY FLOOR REPAIRS. ALSO, FLOOR REPAIRS SHALL BE DOWELED INTO THE EXISTING FLOOR SYSTEM TO PREVENT DIFFERENTIAL SETTLEMENT.

NOTE 6
FOR INSTALLATION IN EXISTING STRUCTURES, AREAS OF THE FLOOR WHICH ARE CUT AND REMOVED FOR SERVICE CONDUIT INSTALLATIONS SHALL BE REPAIRED WITH CONCRETE HAVING MINIMUM STRENGTH OF NOT LESS THAN $F'c = 4,000$ PSI, AND IS AT LEAST 9 INCHES THICK IN THE AREAS AROUND AND TO THE REAR OF THE SERVICE LEGS.

NOTE 7
FOR NEW CONSTRUCTION, THE AREAS OF THE FLOOR ALONG THE LIFT RUNWAYS SHOULD BE DEEPENED TO 9 INCHES FOR EASE OF ANCHOR INSTALLATION. ALSO, PROVIDE A MINIMUM 9 INCH THICKNESS AROUND AND TO THE REAR OF THE SERVICE LEGS.

FOR NEW CONSTRUCTION WHERE IN FLOOR RADIANT HEATING TUBES ARE USED, THESE TUBES MAY BE PLACED UNDER THE LIFT AREA PROVIDED THE SLAB IS CAST SUFFICIENTLY THICK. A MINIMUM OF 6 INCHES CLEARANCE SHOULD BE PROVIDED FOR ANCHOR BOLTS AND DRILLING ALLOWMENT. THE INSTALLER MUST BE NOTIFIED THAT RADIANT TUBES ARE USED SUCH THAT CARE IS TAKEN NOT TO OVER DRILL THE DEPTH OF THE ANCHORS.

NOTE 8
THE SUPPORT PLATES OF THE CONTINUOUS BASE SHALL NOT BE INSTALLED OVER A CONSTRUCTION JOINT OF THE FLOOR SYSTEM. THE SUPPORT BASE PLATES SHALL NOT BE PLACED NEARER THAN 10 INCHES TO A CONSTRUCTION JOINT OR FREE EDGE OF THE FLOOR SLAB.

NOTE 9
A MAXIMUM OF ONE INCH ANCHOR BOLT SHIM THICKNESS IS PERMITTED. INDIVIDUAL ANCHOR BOLT SHIMS ARE AVAILABLE IN A RANGE OF THICKNESSES.

NOTE 10
WHERE MORE THAN ONE INCH OF SHIM LEVELING IS REQUIRED, FULL SUPPORT PLATE CONTACT SHIMS ARE AVAILABLE AT ADDITIONAL COST. THE FULL CONTACT SHIM PLATES SHALL THEN BE ACCURATELY LEVELLED USING INDIVIDUAL ANCHOR BOLT SHIMS.

NOTE 11
WELT FASTENING SYSTEMS, AT WEDGE ANCHORS ARE PROVIDED WITH THE LIFT FOR ANCHORING THE LIFT UNIT TO THE FLOOR SYSTEM. THE NUMBER AND THE SIZE OF ANCHOR BOLTS SPECIFIED IN THE DRAWING MUST BE USED TO ATTACH THE LIFT UNIT. ANCHOR BOLTS OF FULL LENGTH MUST BE USED IN ALL LOCATIONS PROVIDED ON THE BASE OF THE LIFT UNIT.

NOTE 12
IN CERTAIN CASES THE FLOOR SLAB MAY HAVE ADEQUATE STRENGTH TO SUPPORT THE LIFT UNIT BUT MAY NOT BE THICK ENOUGH TO PROVIDE THE MINIMUM EMBEDMENT DEPTH FOR THE AT WE-JT ANCHOR BOLTS. FOR THIS SITUATION EPOXY GROUTED ANCHOR RODS MAY BE USED. CONTACT MOHAWK RESOURCES, LTD. FOR WRITTEN APPROVAL OF EPOXY GROUTED ANCHORS AND PROCEDURES AND APPROVED MATERIALS FOR INSTALLING THE LIFT UNIT.

NOTE 13
EXCEPT AS DESCRIBED IN NOTE 7, NO EMBEDDED PLUMBING, TUBES, CONDUITS OR OTHER ITEMS, EXCEPT THE LIFT UNIT SERVICE LEG CONDUITS SHALL BE CLOSER THAN 16 INCHES FROM ANY ANCHOR BOLT. ALSO, THE SERVICE LEG CONDUITS SHALL BE INSTALLED ACCURATELY IN THE LOCATIONS SHOWN IN THE PLAN AND DETAIL VIEWS TO MINIMIZE THE EFFECT ON THE ANCHORAGE.

NOTE 14
NO ANCHOR BOLT SHALL BE INSTALLED CLOSER THAN 10 INCHES FROM ANY FREE EDGE OR FLOOR JOINT.

NOTE 15
PROVIDE TWO, 4 INCH SCH 40 PVC PIPE AS A HYDRAULIC-PNEUMATIC SERVICE SUPPLY CONDUIT RUNNING FROM THE POWER UNIT TO EACH SERVICE LEG.

NOTE 16
PROVIDE 4, 1 INCH SCH 40 STEEL CONDUITS AS ELECTRICAL SERVICE SUPPLY RUNNING FROM THE POWER UNIT TO THE SERVICE LEGS. THESE CONDUITS SHALL BE INSTALLED AS SHOWN ON THE SECTION VIEWS AND MUST BE INSTALLED ACCORDING TO APPLICABLE ELECTRICAL CODES.

NOTE 17
PROVIDE TEMPORARY CAPS FOR ALL CONDUITS AND EMBEDDED PIPES. IT IS RECOMMENDED TO LEAVE PULL ROPES IN CONDUITS FOR EASE OF LIFT INSTALLATION.

NOTE 18
THE CONTROL CONSOLE MUST BE LOCATED IN THE VICINITY OF THE LIFT. IT SHOULD BE PLACED FAR ENOUGH AWAY FROM THE LIFT TO ALLOW FOR ACTIVITIES AROUND THE LIFT. THE ENCLOSED DRAWINGS SHOW THE CONSOLE IN A STANDARD POSITION. THE CONTROL CONSOLE MAY BE LOCATED ON EITHER SIDE AND ANYWHERE ALONG THE LENGTH OF THE LIFT, BUT ANY DEVIATIONS FROM THE ENCLOSED DRAWINGS MAY REQUIRE LONGER CABLES, HOSES, CONDUIT, ETC. ADDITIONAL EXPENSE TO THE PURCHASER.

NOTE 19
THE LIFT UNIT REQUIRES A HIGH VOLTAGE POWER SOURCE. A LOCKOUT/TAGOUT ELECTRICAL DISCONNECT BOX MUST BE PROVIDED FOR THE POWER SOURCE. THE LOCKOUT/TAGOUT DISCONNECT BOX MUST BE INSTALLED ACCORDING TO APPLICABLE ELECTRICAL CODES. THIS ELECTRICAL DISCONNECT IS TO BE PROVIDED BY OTHERS.

NOTE 20
PROVIDE ONE, 1 INCH SCH 40 RIGID STEEL CONDUIT AS ELECTRICAL SERVICE SUPPLY RUNNING FROM THE BUILDING POWER SOURCE TO THE CONTROL CONSOLE. THIS CONDUIT IS SHOWN UNDERGROUND, ALTERNATIVELY IT MAY BE BROUGHT TO THE CONTROL PANEL OVERHEAD DEPENDING ON CUSTOMER PREFERENCE. PROVIDE A PRACTICAL THIS ELECTRICAL SUPPLY CONDUIT AND DISCONNECT BOX MUST BE INSTALLED ACCORDING TO LOCAL ELECTRICAL CODE REQUIREMENTS.

NOTE 21
PROVIDE ONE, 1 INCH SCH 40 RIGID STEEL CONDUIT AS A COMPRESSED AIR SUPPLY. THIS CONDUIT IS SHOWN UNDERGROUND, ALTERNATIVELY IT MAY BE BROUGHT TO THE CONTROL PANEL OVERHEAD DEPENDING ON CUSTOMER PREFERENCE. IF BROUGHT OVERHEAD, PROVIDE FLEX CONDUIT CONNECTING THE TERMINAL END OF THE CONDUIT TO THE CONTROL CONSOLE.

NOTE 22
THE LIFT UNIT REQUIRES CLEAN DRY COMPRESSED AIR AT THE PRESSURE AND VOLUME SHOWN ON THE LIFT UNIT DATA TABLE. A FILTER/LUBRICATOR/REGULATOR IS SUPPLIED WITH THE LIFT UNIT FOR THE LOCKING SYSTEM ONLY. A FILTER/LUBRICATOR/REGULATOR, AIR DRYER AND SHUTOFF VALVE MUST BE PROVIDED FOR THE LIFT UNIT TO OPERATE THE OPTIONAL ACCESSORIES. THE REQUIRED VOLUME OF AIR SHOWN IN THE LIFT UNIT DATA TABLE RECOGNIZES THAT NOT MORE THAN ONE AUXILIARY AIR CONSUMER WILL BE USED SIMULTANEOUSLY.

NOTE 23
ALL FLOOR REQUIREMENTS ARE BASED ON A CONCRETE SLAB THAT IS ON GRADE (SUPPORTED BY SOIL). ANY OTHER TYPE OF INSTALLATION INVOLVING A SLAB NOT ON GRADE (I.E. SLAB SUPPORTED BY PYLONS, SECOND STORY SLAB, ETC.) MUST BE REVIEWED & ANALYZED FOR SUITABILITY BY THE BUILDING ARCHITECT, AT THE EXPENSE OF OTHERS.

NOTICE OF CONFIDENTIAL INFORMATION
INFORMATION CONTAINED HEREIN IS CONFIDENTIAL AND PROPERTY OF MOHAWK RESOURCES LTD. IT IS TO BE KEPT SECRET AND NOT TO BE DISCLOSED OR REPRODUCED IN ANY MANNER WITHOUT THE WRITTEN PERMISSION OF MOHAWK RESOURCES LTD. THIS NOTICE IS FOR YOUR INFORMATION AND IS NOT TO BE USED FOR ANY OTHER PURPOSES WHATSOEVER.

TOLERANCES UNLESS OTHERWISE SPECIFIED:	± 0.01
FINISH TO BE EPS RMS	± 0.05
WELDING METHOD SHALL CONFORM TO AWS D1.1	
E-7111 CODE 5.3 FLOOR CURB WIRE ONLY.	

SCALE	P-010-A-001
CHECKED	
DATE	4/02
WEIGHT	LB
FROM	

DRAWN	GBK
APPROVED	
TITLE	MOHAWK RESOURCES LTD. SURFACE INSTALLATION
PROJECT NUMBER	P-010-D-007

SURFACE LIFTS ONLY